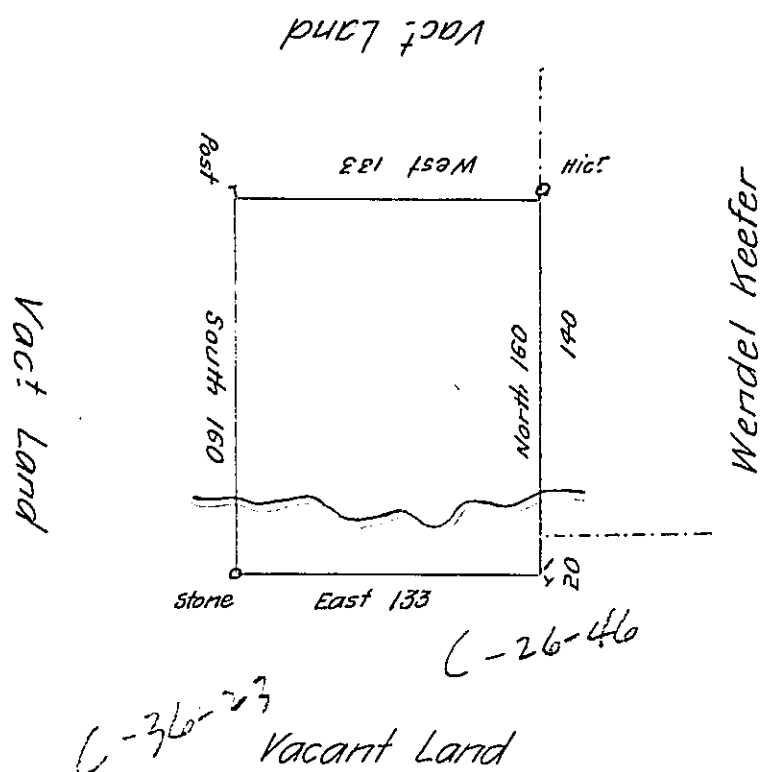


160
 133
 480
 480
 160
 — 21280 125
 1696
 4320
 3392
 9280
 8480



By Virtue of a Warrant from the Proprietaries dated the twelfth
 day of September 1734 Surveyed to John Holter the above described
 tract of land. Situate on Andelauny Creek in the County of Philad^a
 Containing one hundred and twenty five Acres with the Usual Allow-
 ance of Six P. Cent

Surveyed Nov^r 10-1735.

By Nich^o Scull.

IN TESTIMONY that the above is a copy of the original remaining on file in
 the Department of Internal Affairs of Pennsylvania, made
 conformably to an Act of Assembly approved the 16th day of
 February, 1833, I have hereunto set my Hand and caused
 the Seal of said Department to be affixed at Harrisburg,
 this thirteenth day of May 1905

James B. Brown
 Secretary of Internal Affairs.